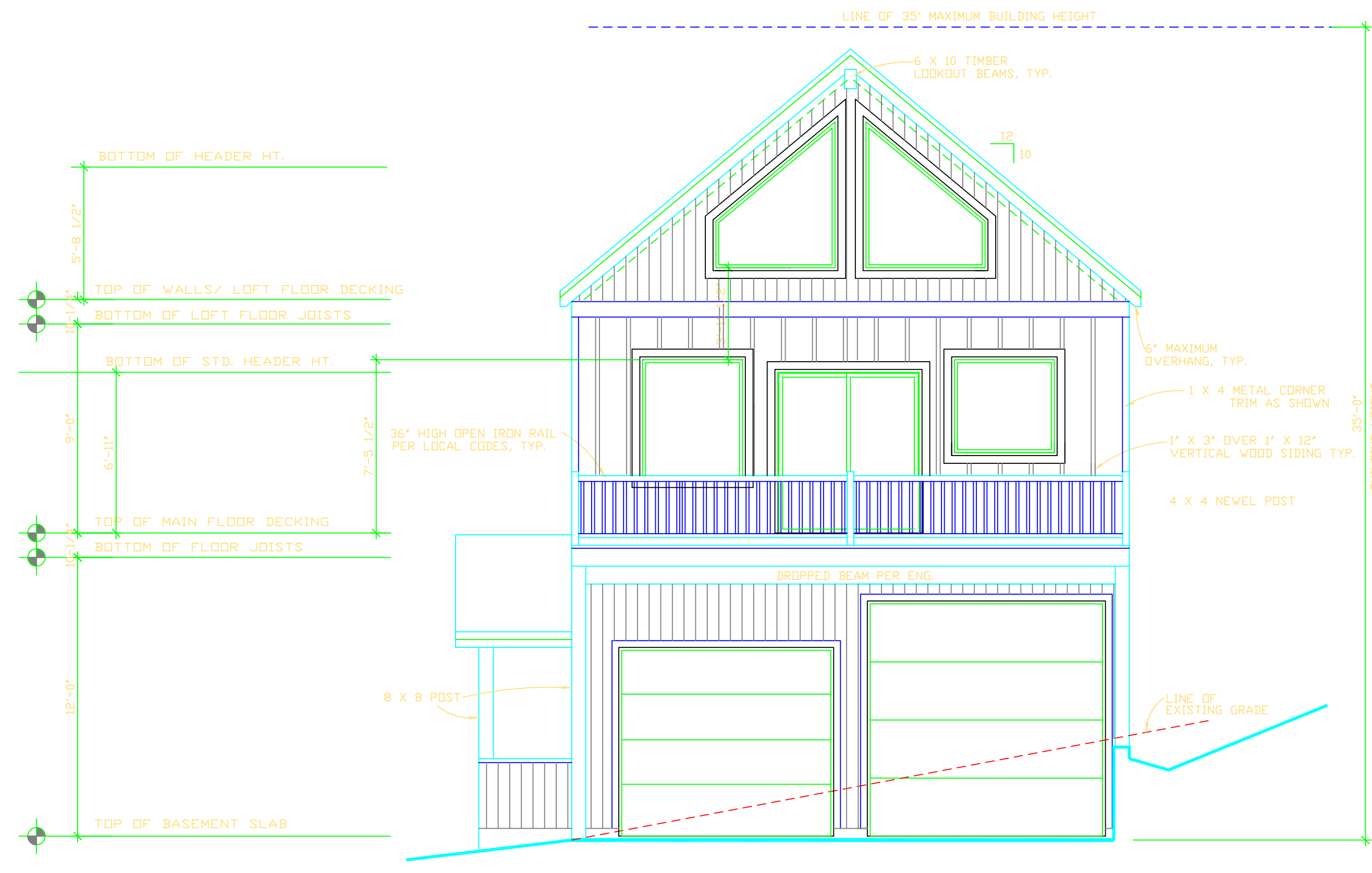


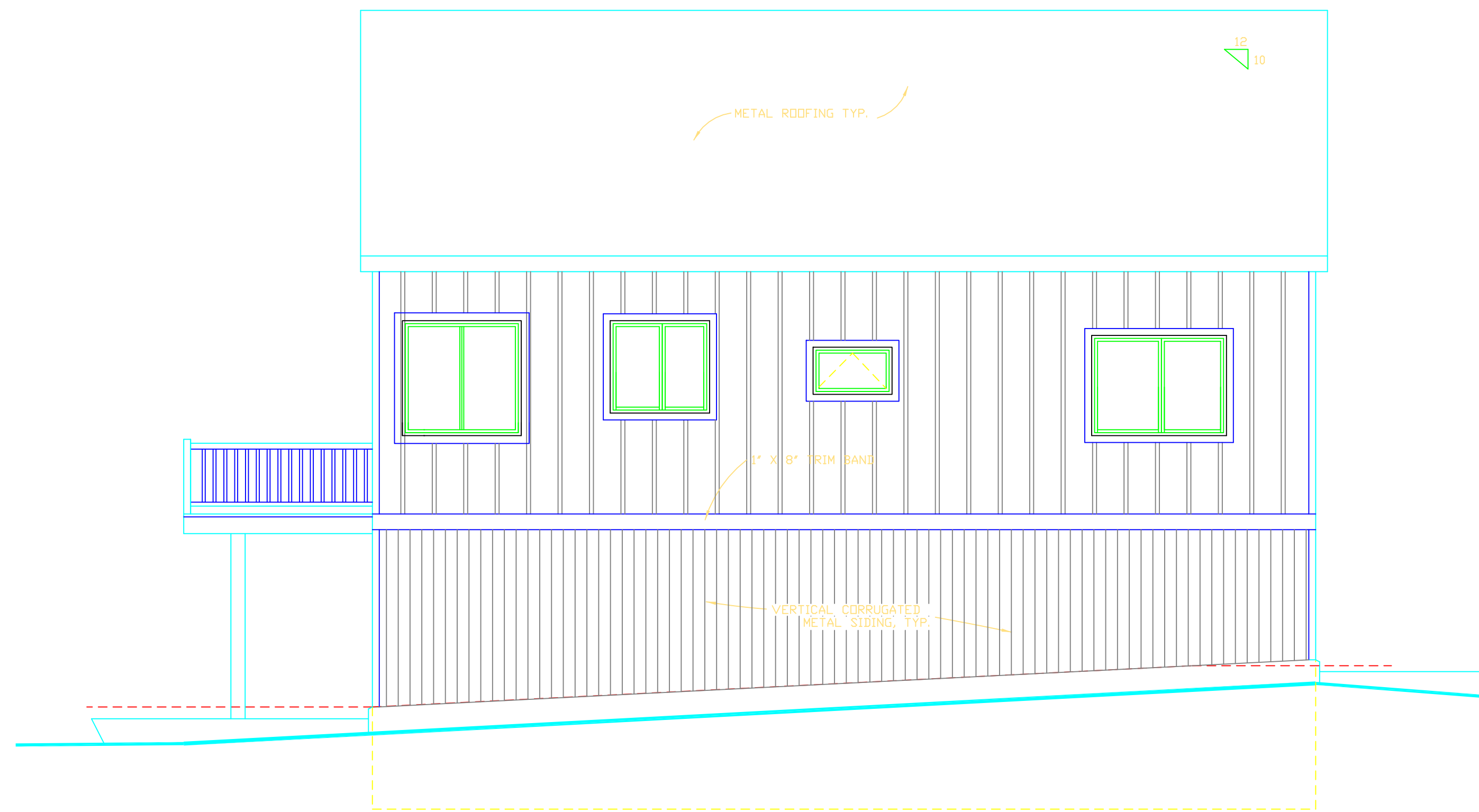
WEST ELEVATION
1/4" = 1'-0"



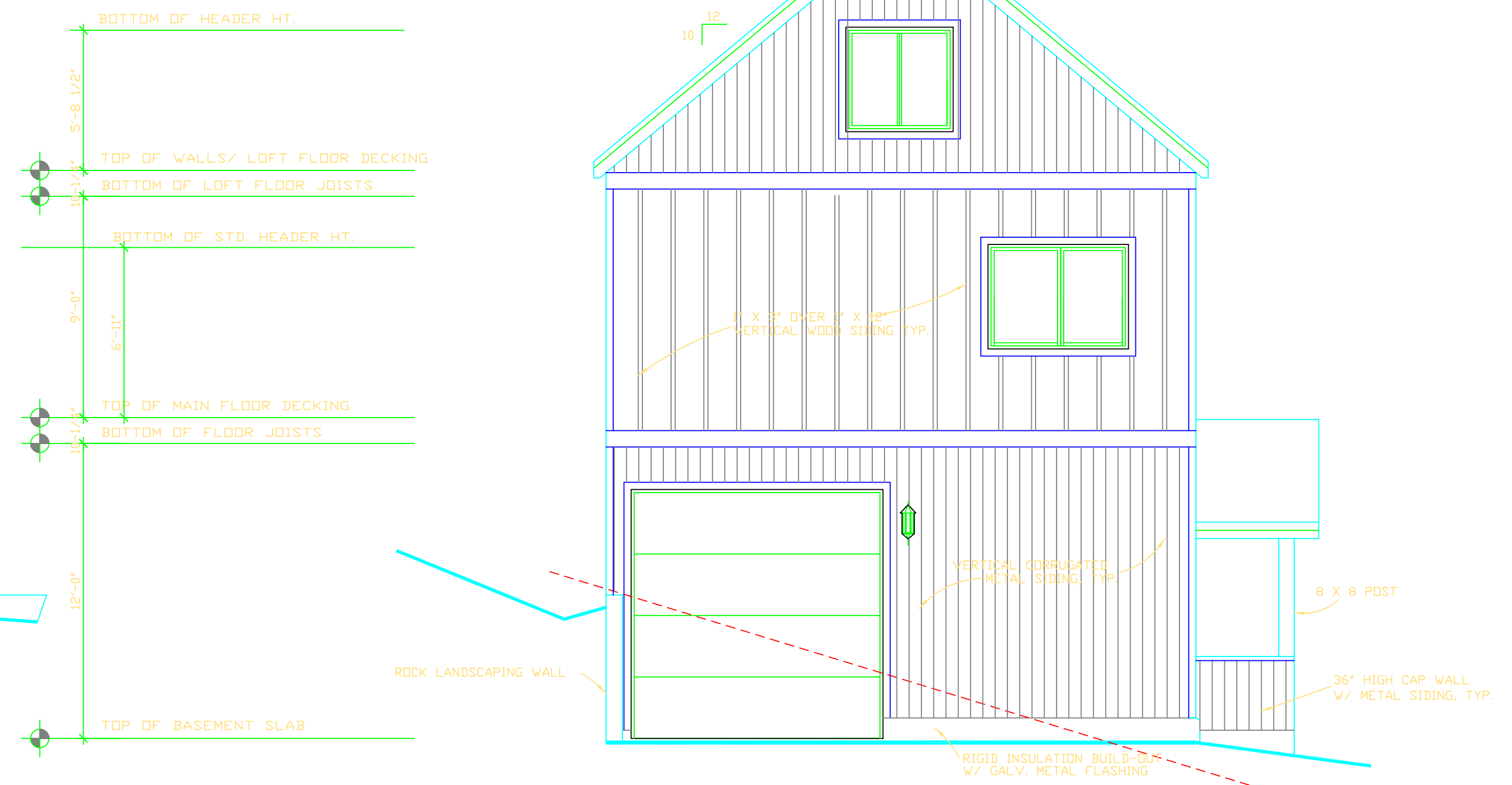
SOUTH ELEVATION
1/4" = 1'-0"

EXTERIOR SPECIFICATIONS:

- SIDING MATERIALS: VERTICAL CORRUGATED METAL SIDING PER MANUF. SPEC. 1" X 3" OVER 1" X 12" VERTICAL WOOD SIDING AS SHOWN. COMPLY WITH 2000 I.R.C. BUILDING CODE.
- WINDOW & DOOR TRIM: 1 X 4 (5/4) METAL TRIM AS SHOWN.
- HORIZONTAL TRIM: FACIA: 1 X 8 HARDBOARD TEXTURED PLOUGHED FACIA SOFFIT: 7/16" X 6" TEXTURED HARDBOARD SIDING OR 4'-0" X 8'-0" TEXTURED MASONITE PANEL FOR PORCH CEILING.
- VERTICAL TRIM: 1 X 4 (5/4) METAL CORNER TRIM AS SHOWN.
- ROOFING MATERIALS: CORRUGATED METAL ROOFING OVER 30# FELT PER MANUF. SPECIFICATIONS & PER LOCAL U.B.C. REQUIREMENTS.
- ATTIC VENTILATION: VENT PANELS WHERE SHOWN.
- ROOF PITCH: SOFFIT AND RIDGE VENT STRIPS OR PANELS PER I.R.C.



EAST ELEVATION
1/4" = 1'-0"



NORTH ELEVATION
1/4" = 1'-0"